

EY7411LA1S / EY7411LA1C Cordless Drill & Driver 3.6V

Technical data

Max. Torque Low : 39.0 in.lbs., High : 13.3 in.lbs.
Speed at No Load Low : 200 rpm, High : 600 rpm
Clutch Torque (Approx.) 2.7-25.7 in.lbs.
 (0.9 in.lbs. per stage, total 21 stage)
Charging Time Usable : 15 minutes
 (using EY0L10B charger) Full : 30 minutes
Weight (incl.battery) 1.1 lbs
Size (LxHxW) 10-55/64" x 5-53/64" x 1-13/16"
Max.Drill Diameter in Metal : 13/64" dia. (spc t=1/16")
Max.Screws Driving Wood screw : 5/32" dia. x 1-1/2"

Working Capacity

Fastening	Wood Screws in Yellow Pine	1/8" dia. x 1/2"	600
	Screws in Sheet Metal (pre-hole)	M5 x 5/16"	1,000
Drilling	Holes in SPC	t=3/64", 5/64" dia.	85

Standard Accessories :

EY7411LA1S
 1 x 1.5Ah Li-ion battery pack (EY9L10B), Clutch lock cover (EY9X007E),
 Charger (EY0L10B)

EY7411LA1C
 1 x 1.5Ah Li-ion battery pack (EY9L10B), Clutch lock cover (EY9X007E)

*Charging times are approximate and may be slightly longer depending on conditions.
 *The tables show average values, and there may be some difference depending on the battery condition, the sharpness of the bit/blade, the material hardness, etc.
 *t = thickness of material

professional cordless power tools

Cordless Drill & Driver
EY7411LA1S

For reliable accuracy during product assembly.



- Screw count function*
- Double tightening counting prevention function*
- Count record function*
- Auto stop function*

REVOLITHIUM

Panasonic Consumer Electronics Co.
Power Tool Division

Executive Offices:
 One Panasonic Way, #1H-5
 Secaucus, NJ 07094

Design and specifications subject to change without notice.

For the dealer and servicer nearest you,
 visit our website at
www.panasonic.com/cordlesstools
 or call **1-800-338-0552**



Panasonic ideas for life

Panasonic ideas for life

Counts and informs the user about the number of screws that have been driven. Support for improving the quality of work by preventing screw driving mistakes.

Screw count function

Prevents screw driving mistakes.

The auto stop function counts the number of times screws are driven and notifies the user when the set number of screws is reached with a buzzer sound to prevent screws from being forgotten. Additionally, it automatically returns to the set value ("0" in case of counting up) after the set number of screws is reached.

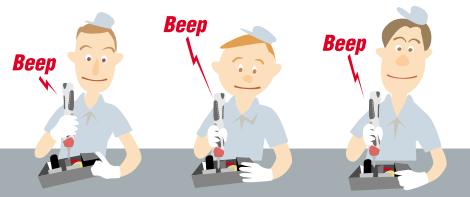
• Either counting up or counting down can be selected

- Counting down**
Counts down from the set number to 0. Automatically returns to the set value when the set value reaches "0".
- Counting up**
Counts up from 0 to the set number. Automatically returns to "0" when the set number is reached.

• The count number can be set up to a maximum of "99".

Select buzzer sound function

3 different kinds of buzzer sounds can be selected to avoid confusion from using the same sound when users work in close proximity to each other.

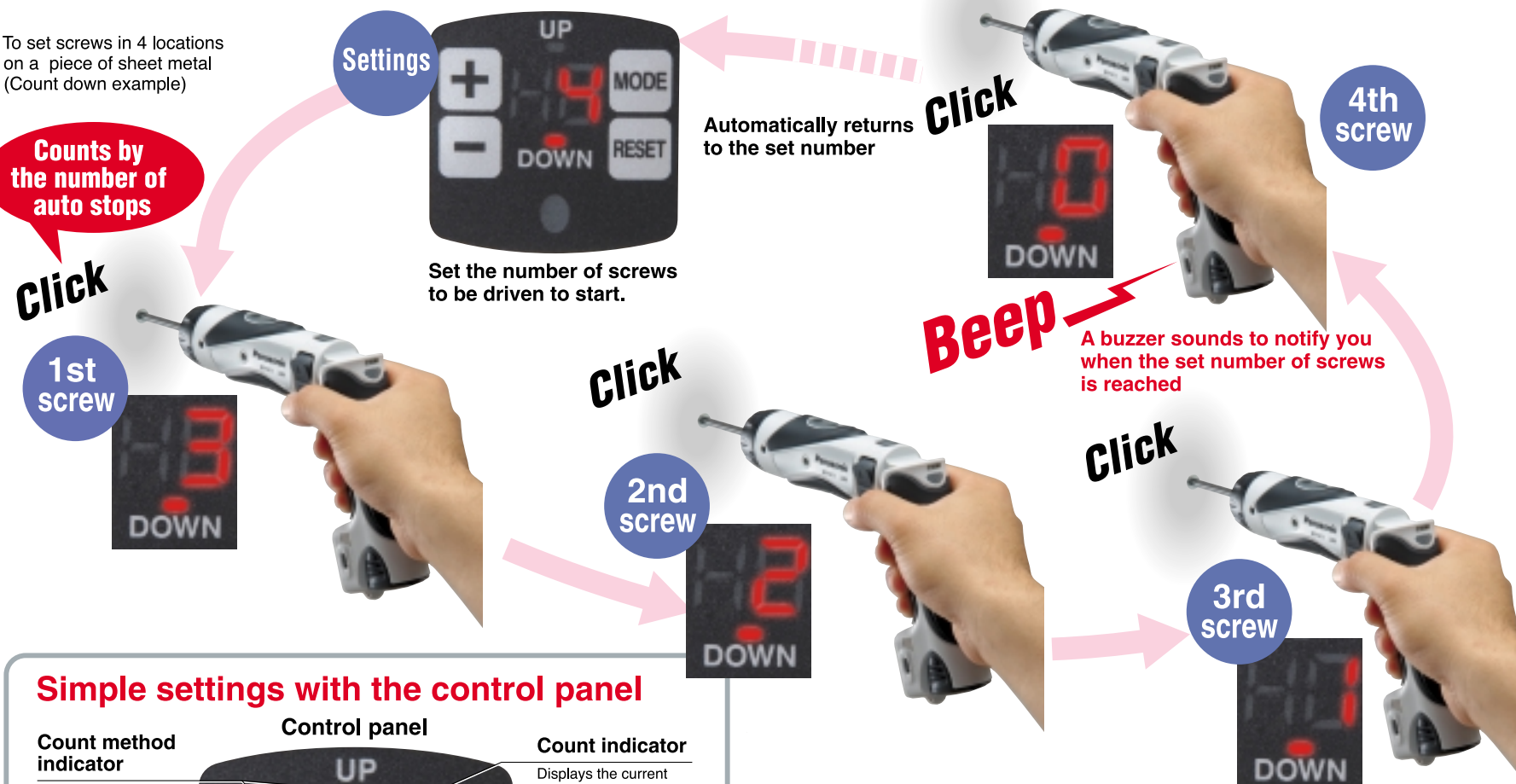


To protect the battery from over discharging Includes a battery cutoff indicator

Prevents over discharging (complete discharge) which is a weak point for Li-ion batteries. Before the battery is fully discharged, the supply of electricity is stopped and a lamp on the main body of the unit blinks to indicate the battery is out of power.



• To set screws in 4 locations on a piece of sheet metal (Count down example)



Simple settings with the control panel

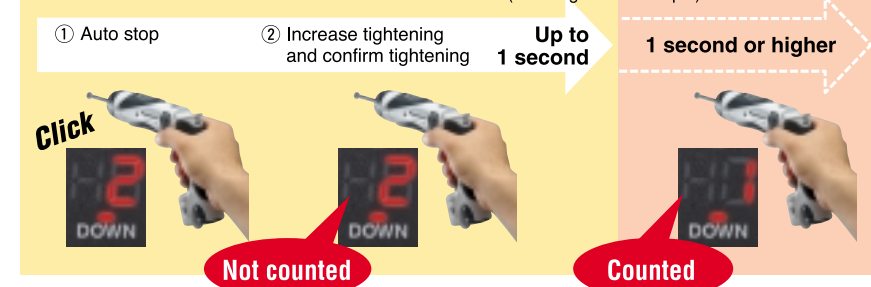
- Control panel**
- Count method indicator**
Displays the selected count direction.
 - + Button**
To select the item you would like to set.
 - Button**
To change the current number or set number.
 - Count indicator**
Displays the current count number.
 - Mode button**
To select the item you would like to set.
 - Reset button**
Resets the current set value.
 - LED Light**

Support for accurate counting

Double tightening counting prevention function

Even if the screw is continuously tightened twice and tightening is confirmed after the screw is driven, if the work is completed within the set time, it is not counted. (The time until the next count can be set for 0-3 seconds at intervals of 0.1 seconds.)

• When the count time is set as 1 second (counting down example).



Count record function

Even if the batteries are changed during use, it is possible to continue working after a battery change because the last count number is memorized.

Hold switch

If the hold switch is ON, the settings and count number will not change even if the control panel is touched by mistake while driver is being used.



Support for quality screw driving

Auto stop function included

Power is turned off at the same time as the clutch engages. There is little difference in torque even during repeated tightening and screws can be tightened accurately. It also prevents the wasting of battery power.

Clutch lock cover

The set number of clutch settings can be protected by the cover. It is convenient to drive screws with the same torque that is used in assembly work in factories etc.



The clutch lock cover is removable. (EY9X007E)

Support for screw driving work

LED light

Screw driving in dark areas is brightly supported. The light goes out after about 5 minutes from being turned on. Includes an automatic function that turns off the light.



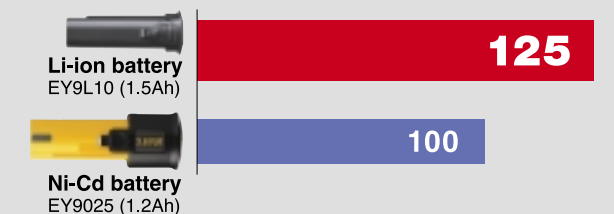
On-Off switch included

Li-ion 3.6V

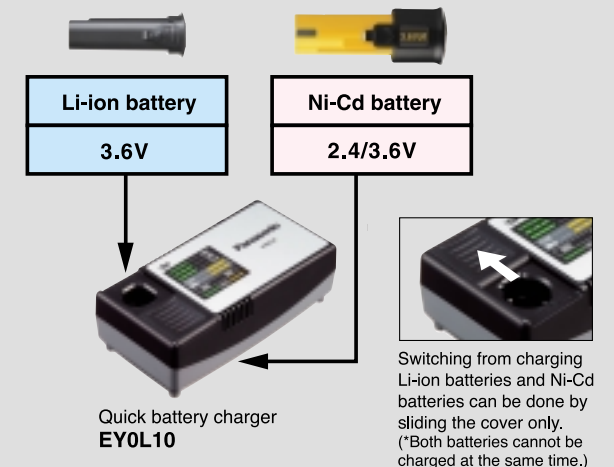
Approx. 25% increase in work volume*

* In comparison to one of our fully-charged EY6225 batteries (company study)

• Work volume index comparison

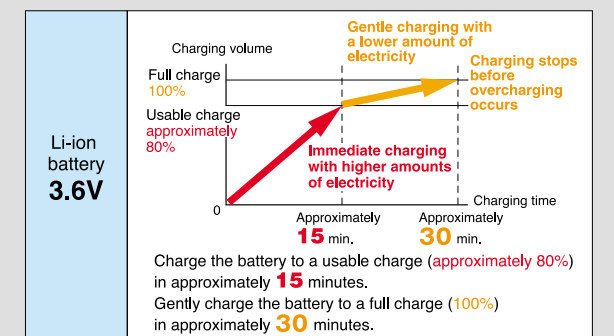


New battery charger that can even charge Ni-Cd batteries



• 2-stage charging method (for Li-ion batteries only)

2-stage charging method matching the characteristics of weak Li-ion batteries in over discharging.



• Charging time indication

Ni-Cd battery	3.6 V	Type C (1.2 Ah)	Approximately 15 min.
	2.4 V	Type D (1.2 Ah)	

